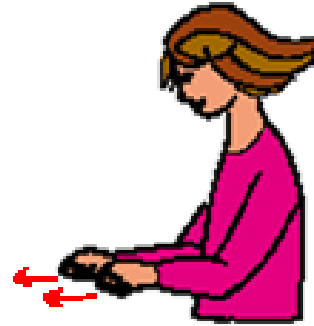




örbylgjuofn



bað



barnavagn



pyrla



þvottavél



blaðra



blómavasi



þríhjól



peytari

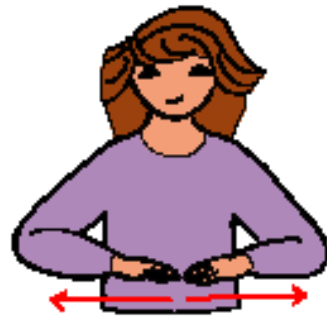


bolli





borð

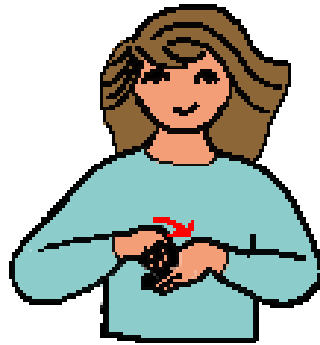


vörubíll





vaskur



brunabíll



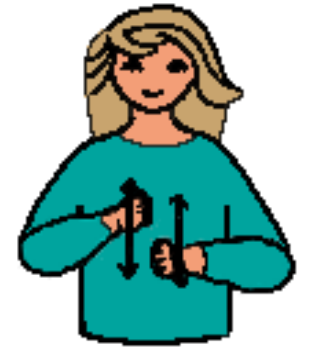


diskur



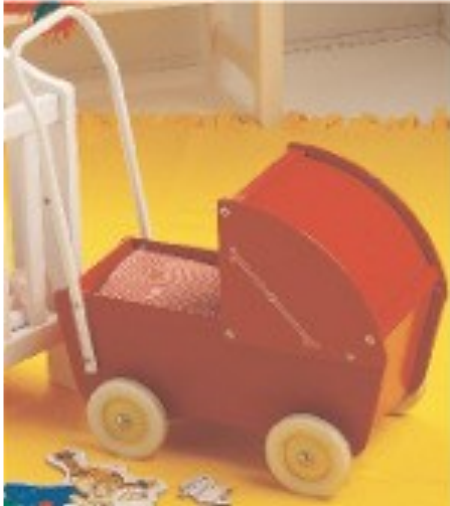
varalitur



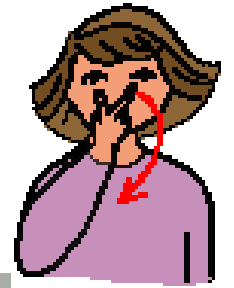


útlarp

dót



dúkkuvagn



tölva

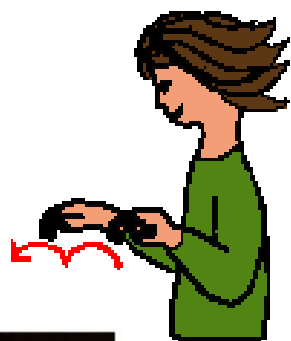


tröll



dúkur





dýr

HB



trúður



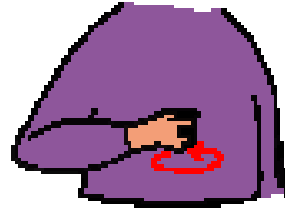
traktor



egg



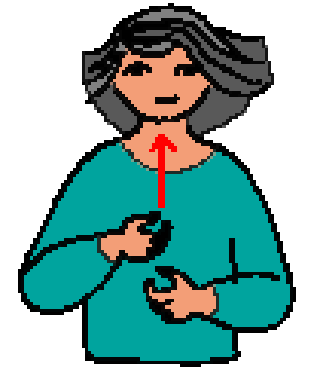
eldavél



tjald



tannbursti



flaska



flugvél



sæng





sturta



fægiskófla





gaffall

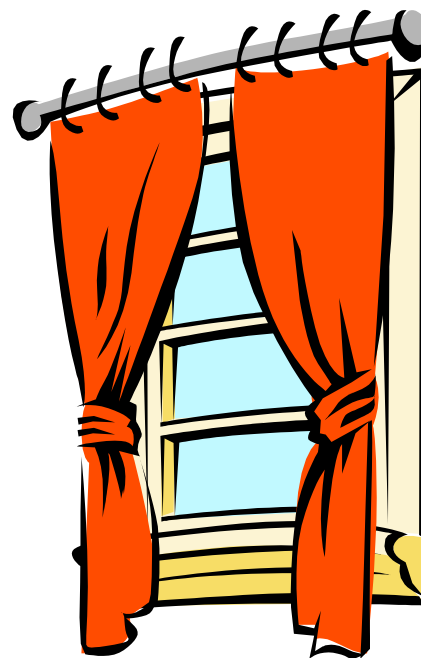


straujárn



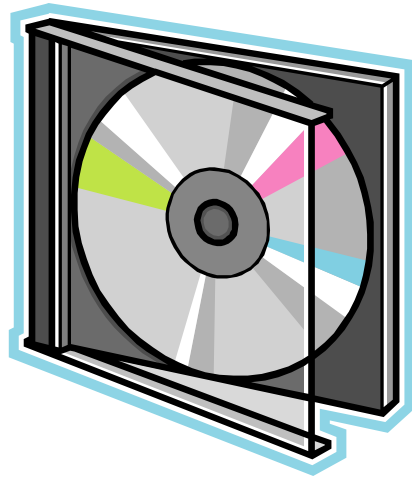


strauja

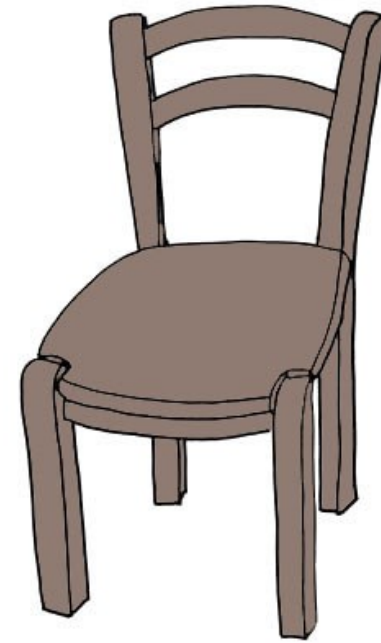


gardínur

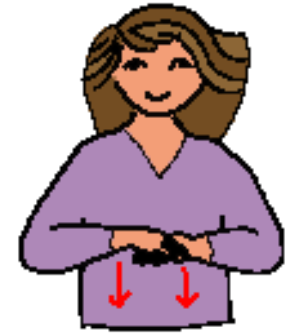




geisladiskur



stóll





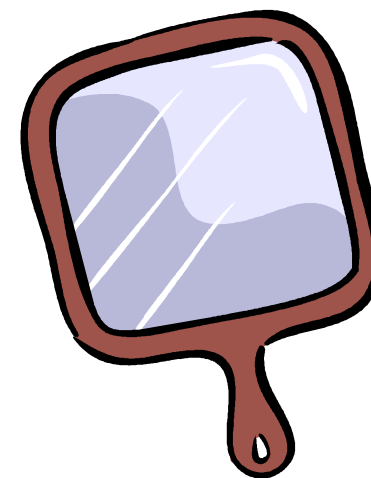
stigi



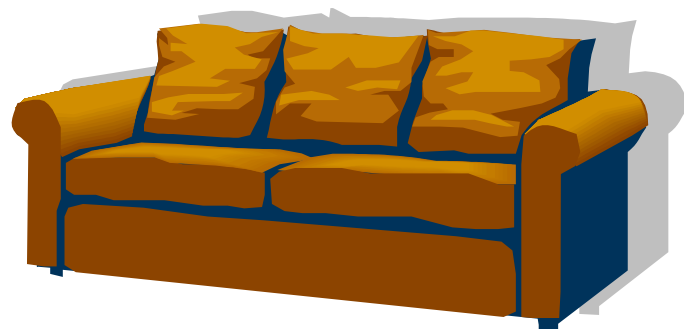
glas



grafa



spiegill



sófi



greiða



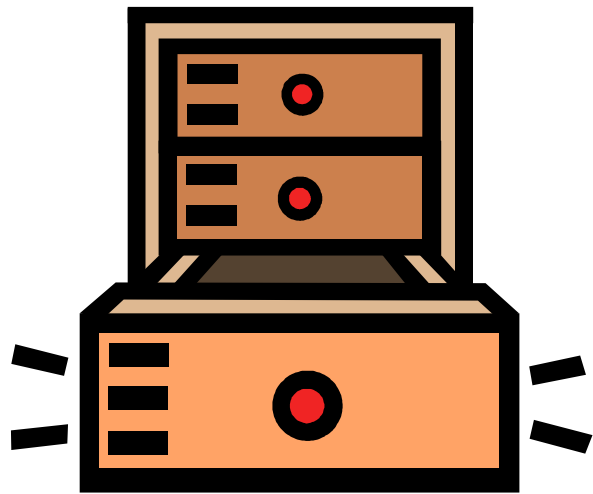
handklæði



sofa







skúffa



hárpurrka

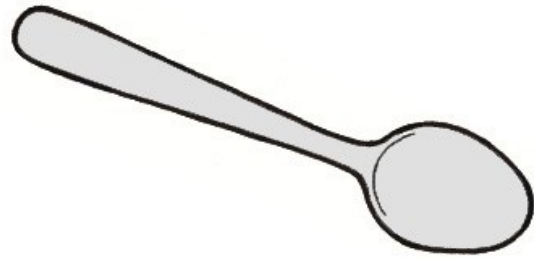
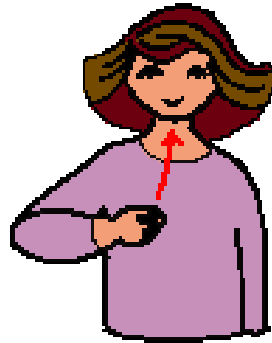




heim



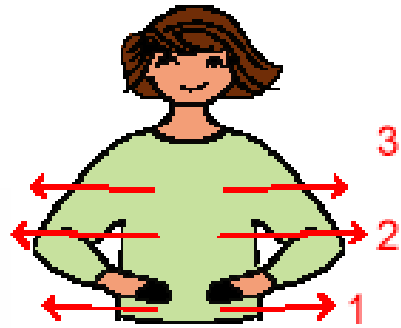
skip



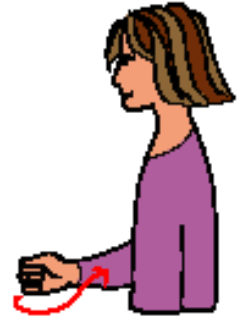
skeið



herbergi



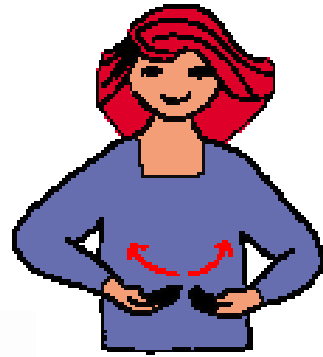
hilla



skápur



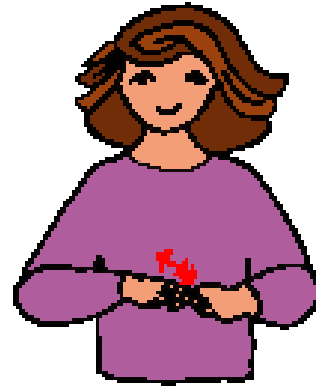
skál



hjólbörur



hnífur



sjónvarp



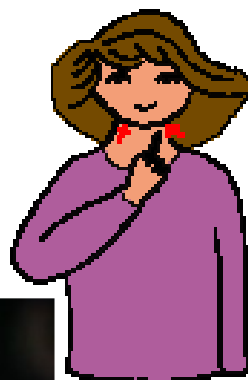


sjampó



hrærivél





ilmvatn

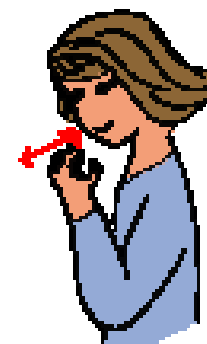


sápa





samverustund



ísskápur



jarðýta



saman

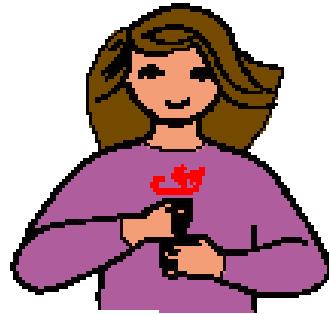


ryksuga



jólasveinn





kaffivél

rúta



rúm



kanna





kerra

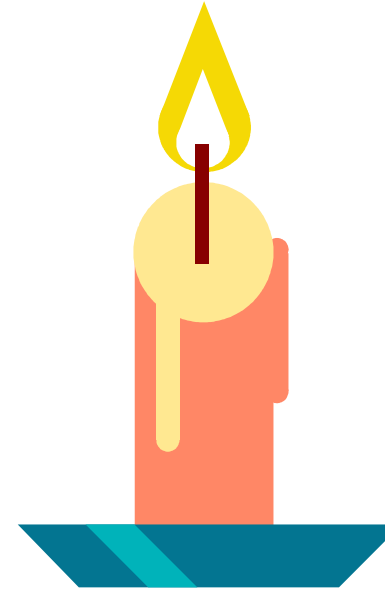


ruslatunna





rifjárn



kerti





klifurgrind

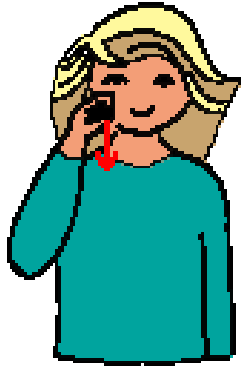


reiðhjól





rakvél



klósett





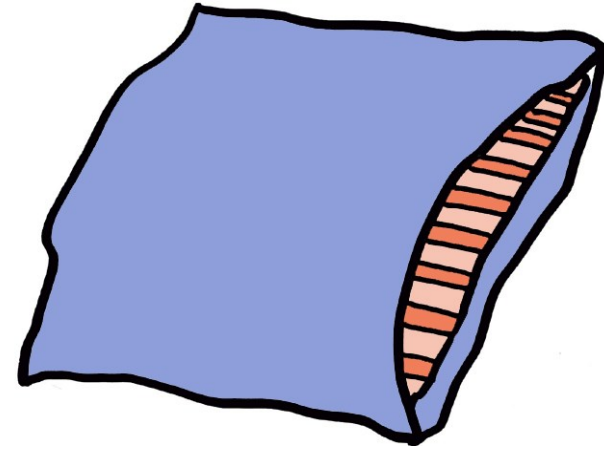
klukka



rakspíri



pottur

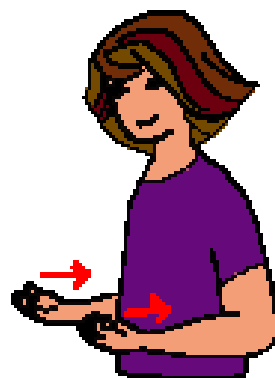


koddi





kottmóða



poki





panna



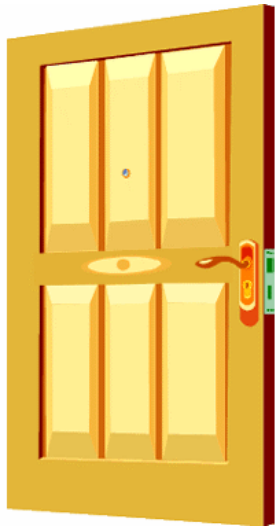
koppur



krani



ostahnífur

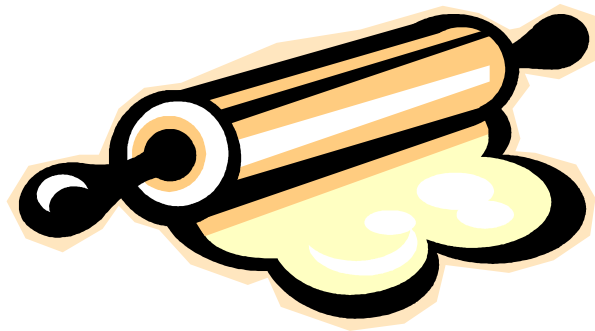
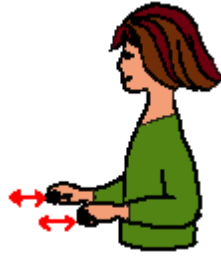


opna



kústur





kökukefli



mynd





mótorhjól



lampi

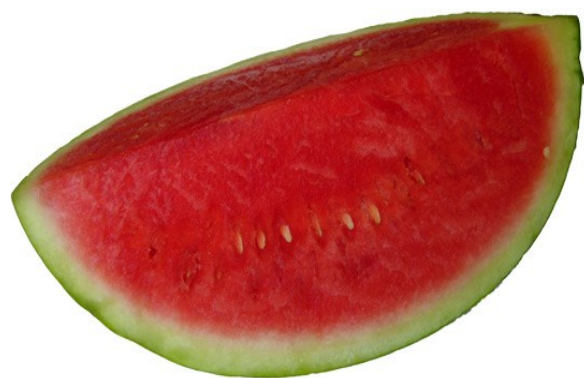




leikfang



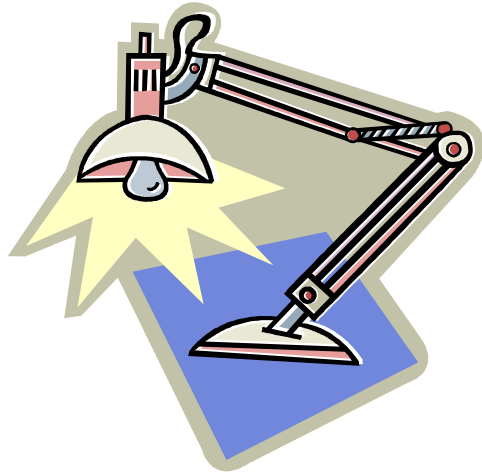
morgunmatur



melóna



lím



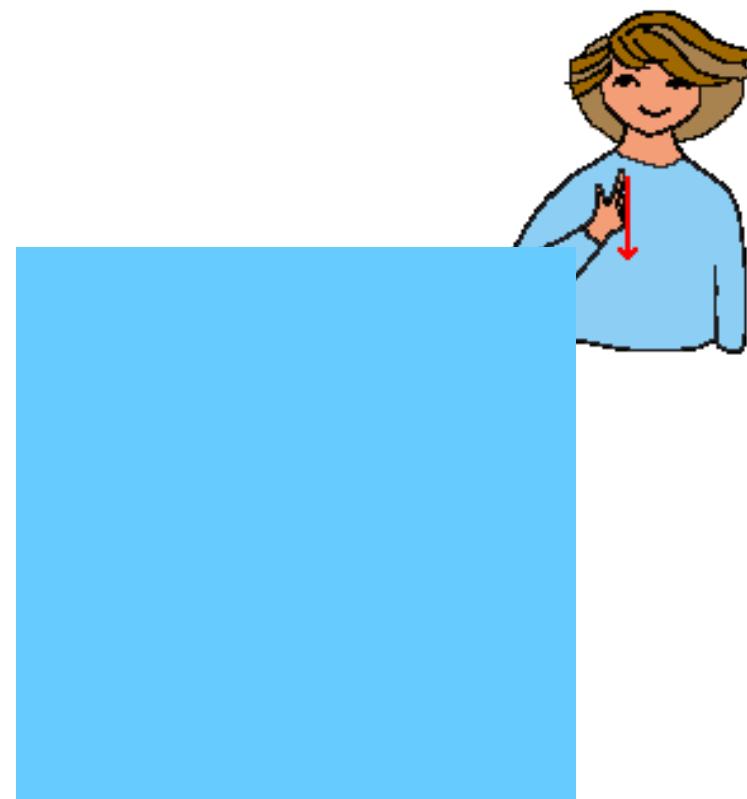
ljós



löggubíll



lyklar



ljósblár



lottó



lyfta

